



# Sheng-Ping Wang, Professor

## Laboratory of Population Dynamics



### Education :

Department of Fishery Science, National Taiwan Ocean University (B.S.)  
 Institute of Oceanography, National Taiwan University (M.S. & Ph.D.)

### Professional experience :

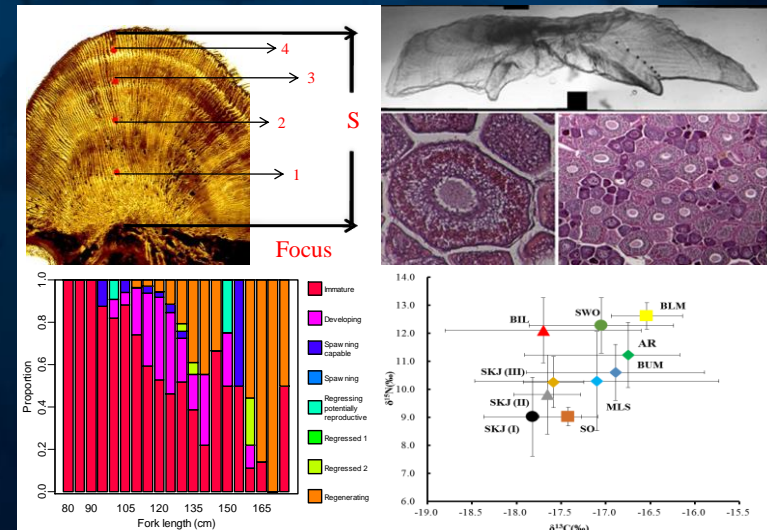
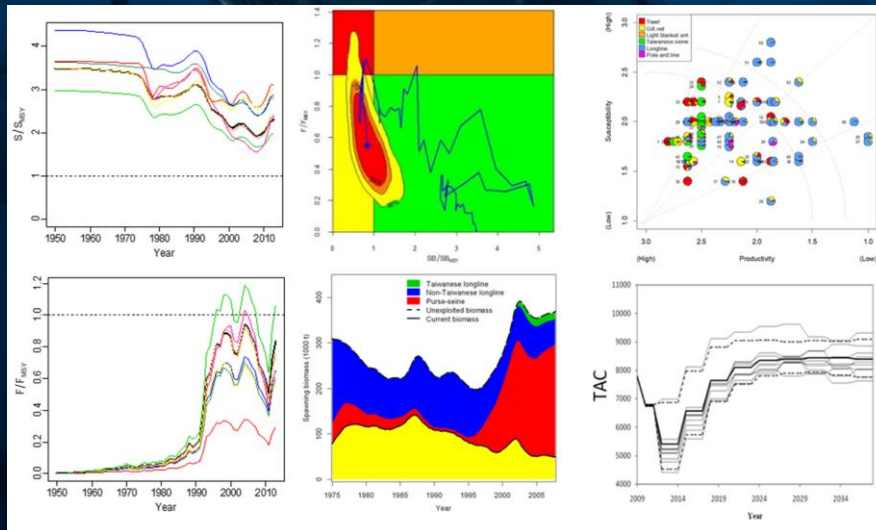
Assistant Professor, Associate Professor and Professor, Department of Environmental Biology and Fisheries Science, National Taiwan Ocean University

### Specialty :

Population Dynamics, Statistics, Fisheries Biology

### Research interest :

- The research direction of the lab is related to the population dynamics of fishery resources, which is an extensive field. We mainly focus on the studies of stock assessment and fishery biology for the resources.
- To achieve the objective of sustainable fisheries, we conduct the analyses based on the fisheries data and biological samples and evaluate the impact of fishery exploitation on the change in biomass of the fishery resources through statistical approaches and mathematical modelling.
- The biological researches we focus are mainly related to age and growth, reproductive biology, feeding ecology, and etc. for fishery resources.



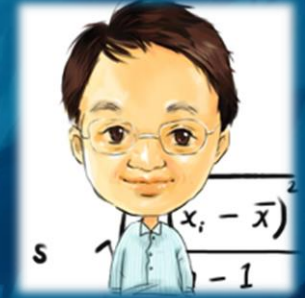


# 王勝平 教授 資源動態解析研究室

學 歷：國立台灣海洋大學 漁業科學學系 (學士)  
 國立台灣大學 海洋研究所 (碩士、博士)

經 歷：國立台灣海洋大學 環境生物與漁業科學學系  
 助理教授、副教授、教授

研究領域：族群動態學、漁業生物學、統計學



## 研究方向：

- 研究方向主要是在於漁業生物資源的族群動態分析，族群動態分析之範圍廣泛，而本研究室則是著重於進行漁業生物資源之資源評估的研究。
- 主要研究內容是進行各項漁獲統計資料及生物調查資料之匯整與分析，進而利用各種不同的數理模式並配合統計分析的方法進行資源量變動及漁業利用率之評估，以期能在合理的漁業開發下達到生物資源永續利用之目的。
- 漁業生物學的研究的部份則主要在於魚類的年齡與成長、生殖生物學、攝食生態等研究。

