

Fish Population Dynamics

Joung Shoou-Jeng Professor

Ph.D., National Taiwan Ocean University, Graduate School of Fisheries Science. (1993)

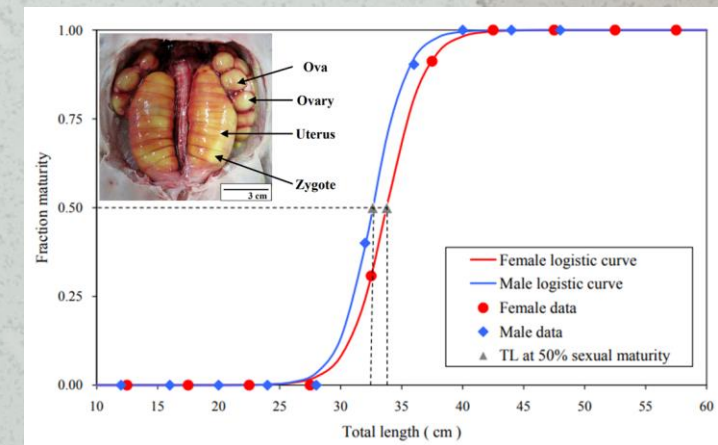
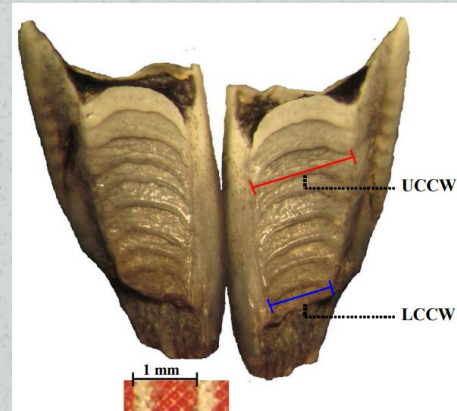
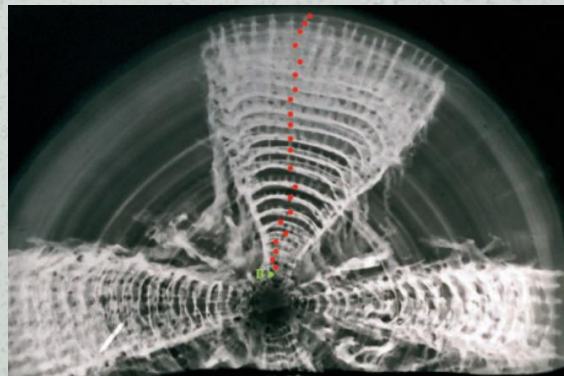
M.S., National Taiwan Ocean University, Graduate School of Fisheries.(1983)

B.S., National Taiwan Ocean University, Fishery.(1981)



Aim

Our researches focus on the taxonomy, stock assessment, reproduction, age and growth, feeding ecology, and movement of elasmobranchs. All the results could be the parameters for further resource management.



Our projects

- Comparison of habitat environment and trophic level for rare chondrichthyans in Taiwan (Ministry of Science and Technology)
- Migration of the Whale Shark in the Northwestern Pacific (Glamour Fine Jewelry)

水產資源研究室

莊守正 教授

國立臺灣海洋大學漁業科學研究所博士 (1993)

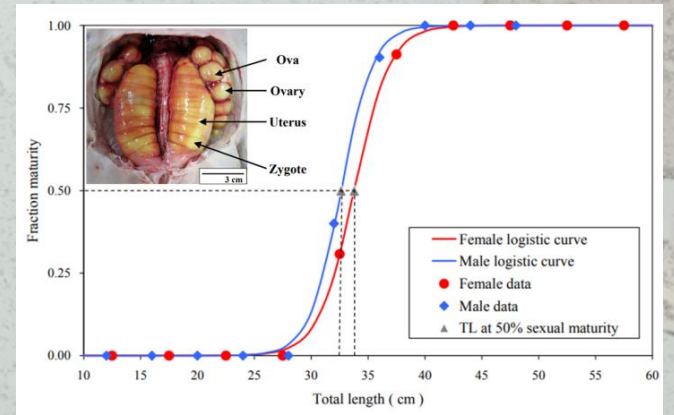
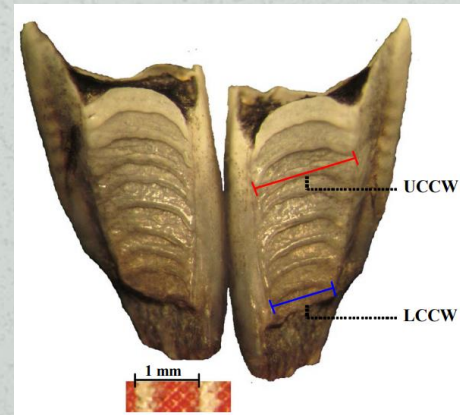
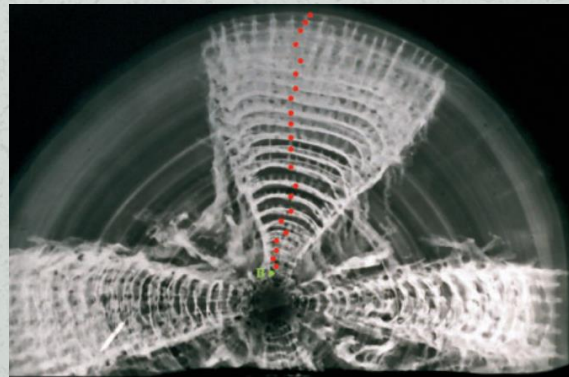
國立臺灣海洋大學漁業研究所 (1983)

國立臺灣海洋大學漁業學系學士 (1981)



研究方向

本研究室致力於軟骨魚類的分類、系群動態、生殖、成長、攝食生態、移動等研究。研究所得之生物學參數有利於漁業資源永續管理措施之擬定。



執行中之研究計畫

- 台灣稀有大洋性軟骨魚類棲地環境及營養位階比較研究 (科技部)
- 西北太平洋鯨鯊洄游行為研究 (駿邑國際)