

Lab for Environment and Fishery Resources

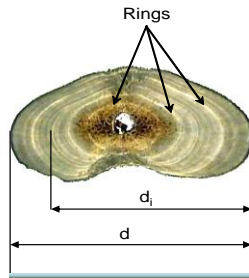
Dr. Nan-Jay Su
Assistant Professor



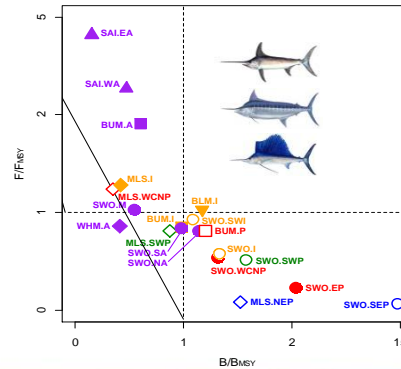
Population dynamics and its relation to environmental change
Stock assessment and management for fishery resources



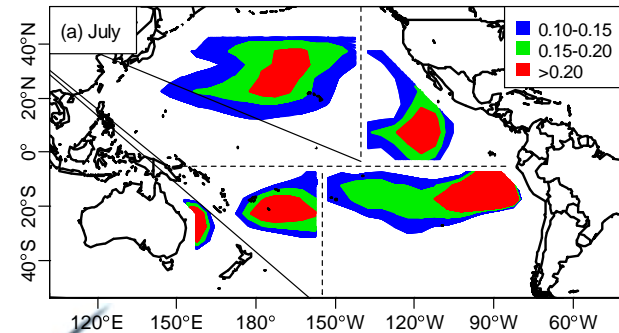
Fishery Biology



Stock Assessment



Fishery Oceanography



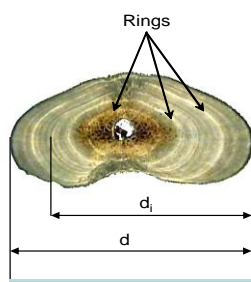
環境與漁業資源研究室

蘇楠傑 助理教授

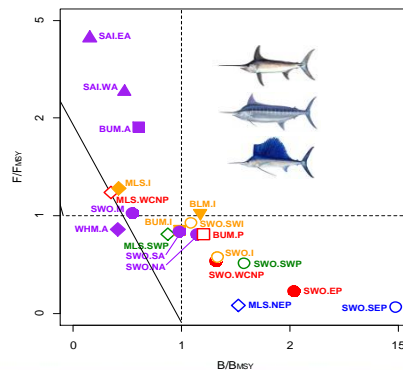


研究方向 探討大洋性漁業資源族群動態與生態環境變動之關係
評估漁業資源現況與利用程度及提供漁業管理與保育科學性建議

漁業生物學研究



資源評估與風險分析



環境因子與時空分布

