

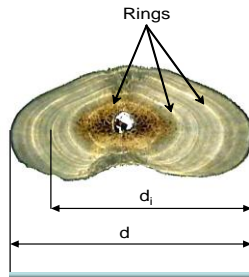
# 環境與漁業資源研究室

蘇楠傑 副教授

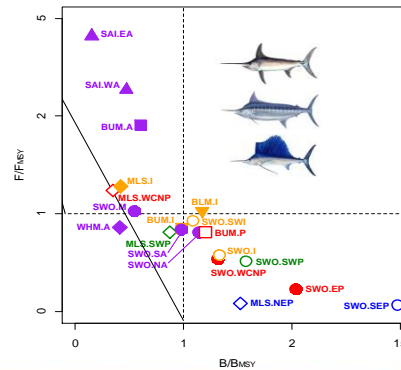


**研究方向** 探討大洋性漁業資源族群動態與生態環境變動之關係  
評估漁業資源現況與利用程度及提供漁業管理與保育科學性建議

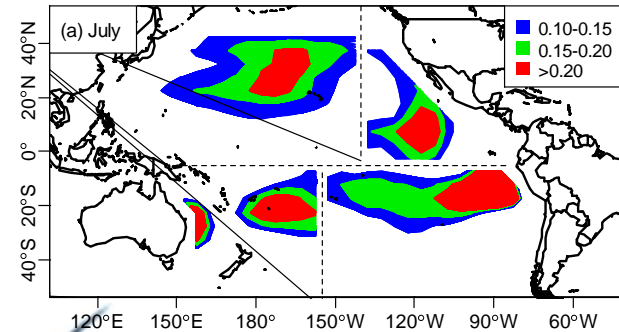
## 漁業生物學研究



## 資源評估與風險分析



## 環境因子與時空分布



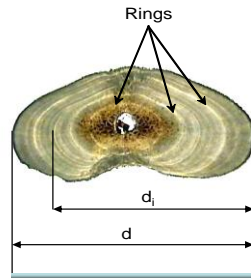
# Lab for Environment and Fishery Resources

Dr. Nan-Jay Su  
Associate Professor

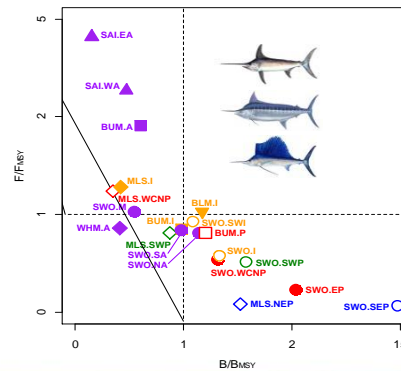


Population dynamics and its relation to environmental change  
Stock assessment and management for fishery resources

## Fishery Biology



## Stock Assessment



## Fishery Oceanography

